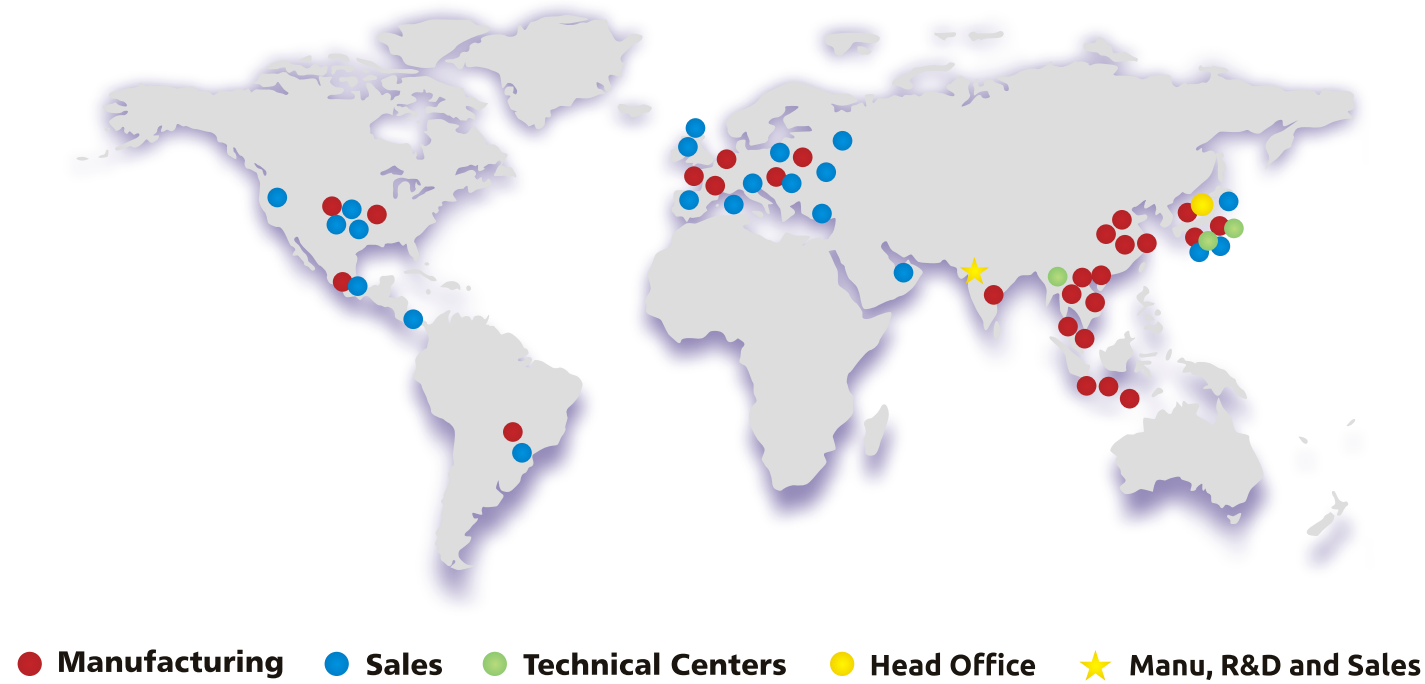


KYB Global Network



Kumagaya-Japan



Vadodara-India



USA



Spain



Czech Republic



Thailand



Sagami - Japan



Malaysia



TSW Products - USA



Vietnam



Concrete Batching Plant



Mobile Batching Plant



Concrete Canal Paver



Self Loading Mixer



Concrete Pump

KYB

conmat

KYB Conmat Pvt. Ltd.

A Subsidiary of KYB, Japan

702-703, N.H. No. 8, Por,
Dist - Vadodara - 391243, Gujarat, INDIA
Ph.: +91-265 - 6132900, 3000300
Email:sales@conmatindia.com
www.conmatindia.com, www.kyb.co.jp

AN ISO 9001:2015 & ISO 27001:2013 Certified Company
CIN: U29248GJ2007PTC052387

Note: The technical specifications of the product may vary depending on the model and are subject to change without prior notice.

Follow us on : [f](#) [t](#) [in](#) [v](#) [p](#)

www.conmatindia.com

JAPANESE
PRECISION

INDIAN
ADVANTAGE

KYB

conmat

MR Series

Concrete Mixer



MKT/PC/6.03/05 R3 August20

Data & Facts

Sr. No.	Detail	MR 60C	MR 70C	MR 70XL	MR 80
1	Nominal Volume (cu.mtr)	6	7	7+	8
2	Filling Height (mm)	2630	2630	2630	2660
3	Mixer Width (mm)	2350	2350	2350	2350
4	Drum Dia (mm)	2267	2267	2267	2267
5	Drum Speed (rpm)	0-14	0-14	0-14	0-14
6	Water Tank Capacity (ltr)	450	450	450	600
Driven By					
7	P.T.O.□/Slave Engine○	□○	□○	□○	○□
8	Power (kw)	52	52	52	74

Due to extra low slump and high discharge performance, KYB-CONMAT Transit Mixers can suitably be used for Slip form concrete paving.

Detachable Charge Hopper and Split Flow guide facilitate easy maintenance.

Drum, Spiral, Hopper, Flow guide, Discharge Chute are made of wear / corrosion resistant material

Rear design eases cleaning and use of cleaning equipment.

KYB-CONMAT brings Japan 's largest selling Concrete Mixer to India

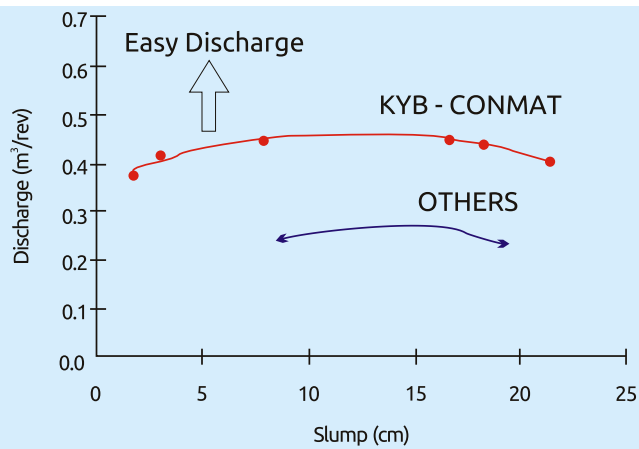
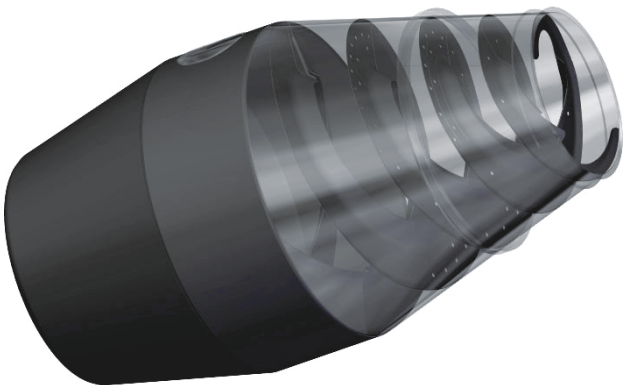
KYB-CONMAT Concrete Mixers are produced in india with technology developed and tested by KYB in Japan. KYB has produced more than 100,000 Transit Mixers over the period of last 60 years.

MR Series has been developed and tested for over one year by simulating Indian working conditions and has gone through rigorous trials in tandem with CONMAT using state of the art sensing and monitoring devices.

MR Series has very high speed concrete charge and discharge, for increased productivity, and can handle very low slump concrete, hence can be used in variety of construction jobs, conventionally not suitable for TM application

KYB products are delivered to Customers around the world with high quality and safety propelled by Japanese Technology

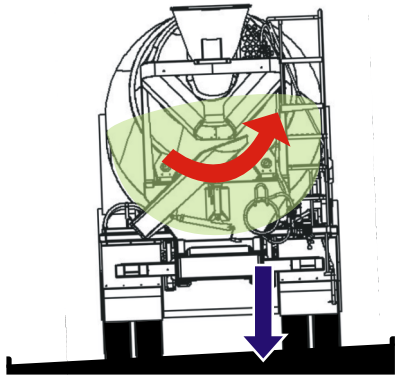
- MR Series 's high speed charge / discharge performance is due to its unique blade design.
- High precision C Shaped spirals are formed by accurate forming dies, maintaining unifor, low resistance flow and hence low power consumption.
- C shaped spirals enhance agitating performance, so concrete could be worked with during delays.
- Low filling level due to high geometric and water line volume improves mixing performance.



- Due to its unique blade design, spiral has wider flute and thus has bigger charge / discharge volume per revolution of the drum.
- Contact area between blades and concrete / unit volume is lower, hence low adhesion of concrete on the spiral resulting in low friction and low power consumption.



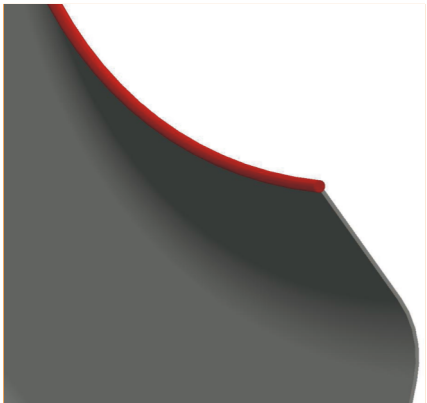
P.T.O. Driven



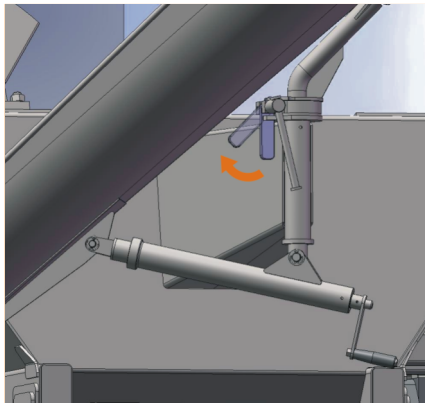
Higher safety during transit due to anti-clockwise Drum rotation for left side travel in India. Low center of gravity for better stability on rough roads



Quality Inspection like an automobile



A wear-proof round bar protects Drum Spiral without concrete accumulation



Chute is locked by a simple operation for enhanced safety during concrete pour



Staircase to inspection platform is designed for operator comfort without compromising safety