



MR Series

Concrete Mixer





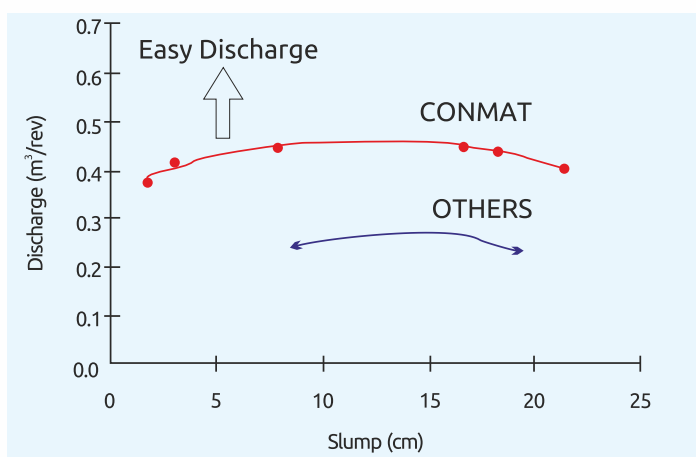
Conmat Concrete Mixer are designed, developed in Japan & modified to suit Indian conditions.

MR Series concrete mixer has been developed and tested by simulating toughest Indian working conditions and has gone through rigorous field trials in tandem using state-of-the-art sensing and monitoring devices. These proven MR Series Concrete Mixer are working across various construction sites in India for the past 2 decades.

MR Series has very high speed concrete charge and discharge, for increased productivity and can handle very low slump concrete, hence can be used in variety of construction jobs conventionally not suitable for TM application.

Conmat products are delivered to Customers around the world with high quality and safety.

- MR Series's high speed charge / discharge performance is due to its unique blade design.
- High precision 'C' Shaped spirals are formed by accurate forming dies, maintaining uniform, low resistance flow resulting in low power consumption.
- 'C' shaped spirals enhance agitating performance, so concrete could be worked with even during delays.
- Low filling level due to high geometric and water line volume-improves mixing performance.



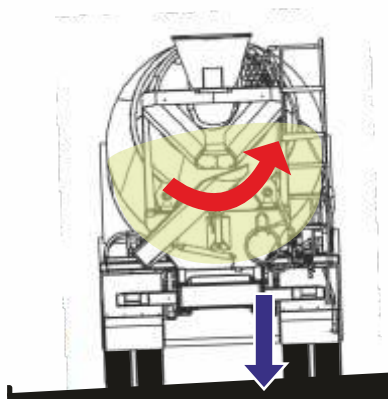
- Due to its unique blade design, spiral has wider flute and thus has bigger charge / discharge volume per revolution of the drum.
- Contact area between blades and concrete / unit volume is lower, hence low adhesion of concrete on the spiral resulting in low friction and low power consumption.

| Sr.No. | Description | MR 60C | MR 70C | MR 70XL | MR 80 |
|-----------|------------------------------|--------|--------|---------|-------|
| 1 | Nominal Volume (cu.mtr) | 6 | 7 | 7+ | 8 |
| 2 | Filling Height (mm) | 2630 | 2630 | 2630 | 2660 |
| 3 | Mixer Width (mm) | 2350 | 2350 | 2350 | 2350 |
| 4 | Drum Dia (mm) | 2267 | 2267 | 2267 | 2267 |
| 5 | Drum Speed (rpm) | 0-14 | 0-14 | 0-14 | 0-14 |
| 6 | Water Tank Capacity (ltr) | 450 | 450 | 450 | 600 |
| Driven By | | | | | |
| 7 | Drive-P.T.O.□ /Slave Engine○ | □ ○ | □ ○ | □ ○ | □ |
| 8 | Slave Engine Power (kw) | 52 | 52 | 52 | - |

- Due to extra low slump and high discharge performance, Conmat Transit Mixer can suitably be used for slip form concrete paving.
- Detachable Charge Hopper and Split Flow guide facilitate maintenance.
- Drum, Spiral, Hopper, Flow guide, Discharge Chute are made of wear / corrosion resistant material.
- Superior rear design eases cleaning and use of cleaning equipment.



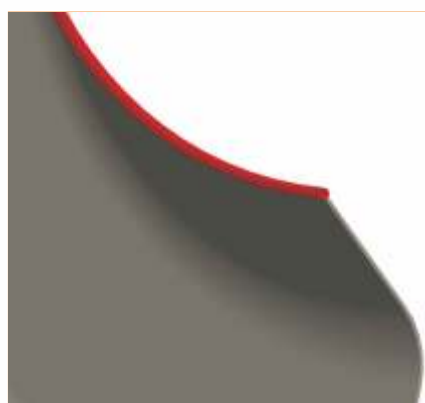
P.T.O. Driven



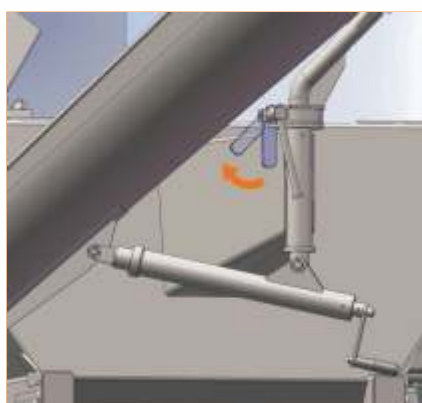
Higher safety during transit due to anti-clockwise Drum rotation for left side travel in India. Low center of gravity for better stability on rough roads



Quality Inspection like an automobile



A wear-proof round bar protects Drum Spiral without concrete accumulation

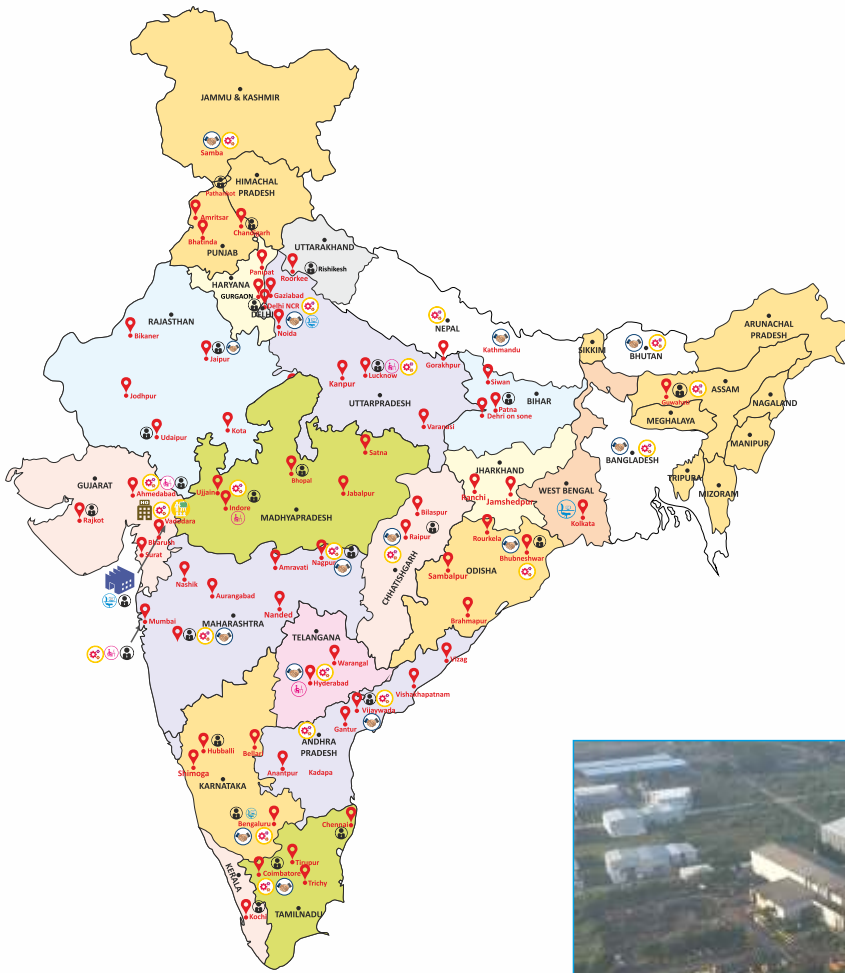


Chute is locked by a simple operation for enhanced safety during concrete pour



Staircase to inspection platform is designed for operator comfort without compromising safety

SALES & SERVICE NETWORK



| | |
|--|--------------------|
| | Manufacturing Unit |
| | Head Office |
| | Regional Office |
| | Branch office |
| | Dealers |
| | Spares Depot |
| | Training Center |
| | Sales Executive |
| | Service Engineers |
| Branch Offices | |
| | Ahmedabad |
| | Bangalore |
| | Ghaziabad |
| | Hyderabad |
| | Indore |
| | Kolkata |
| | Mumbai |
| SERVICE / SUPPORT / SPARES +91 - 7878740000 | |



Works : Vadodara - Gujarat



Concrete Batching Plant
(INFRA Series)



Concrete Batching Plant
(RMC Series)



Mobile Batching Plant



Deep Bucket Batching Plant



Tora Batching Plant



Self Loading Mixer



Stationary Concrete Pump



Concrete Canal Paver



Concrete Road Paver



Concrete Mixer

CONMAT HEAVY INDUSTRIES PVT. LTD.

Formerly Known as KYB Conmat Pvt. Ltd.

702-703, N.H. No. 8, Por,
Dist - Vadodara - 391243, Gujarat, INDIA

Ph.: +91-265 - 6132900, 3000300

Email:sales@conmatindia.com

www.conmatindia.com

ISO Certified :- 9001:2015, 27001:2022 & 45001:2018

CIN: U29248GJ2007PTC052387



Follow us on :

Note: The technical specifications of the product may vary depending on the model and are subject to change without prior notice.